

**BD\_SW\_4BC\_37 Kawasaki ZX10 RR – 2021 on, 4 button, Mode Up-Down, Reset, Right > Handlebar race switches for direct clutch post mounting.**

This switch is designed for use on race/track bikes where the normal road bike control functions are no longer needed

The aluminium assembly has been ergonomically designed for easy use and encompasses 4 momentary switches as described below with direct mounting onto the clutch post to save handlebar space.

The offset design moves the **RESET** function uppermost to ensure clearance when using a thumb brake below the handlebars.

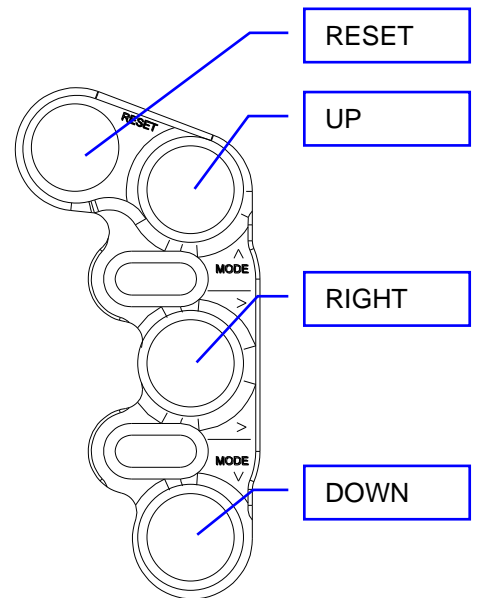
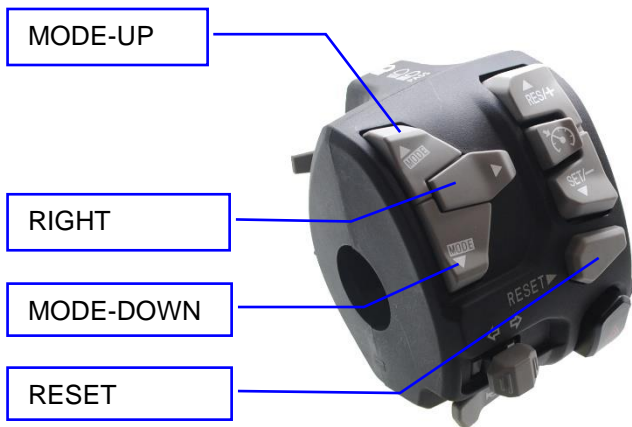
Use the two slotted M5 bolts to adjust left / right to best suit the rider.

May be used with the standard and KIT ECU systems. For PIT speed function on KIT systems an additional single switch element is available.



**Function:**

1	Blue	RESET
2	Green	UP - Mode
3	Black	Right - function
4	Green	DOWN - Mode



**Electrical / Mechanical Characteristics**

Wire..... Type 55 / 24  
 Switch sealing..... IP67  
 Housing..... Aluminium

Coating..... Black anodise  
 Wire length ..... Same as standard

**Ordering Information**

Part No.	Connector	Description
BD-SW-4BC-37-K	Plug n Play	4 way handlebar switch to suit ZX10 RR 2021 onward, with 36mm in-line K clutch clamp See page 3 for other alternative mounting clamps

---

**Electrical connection**

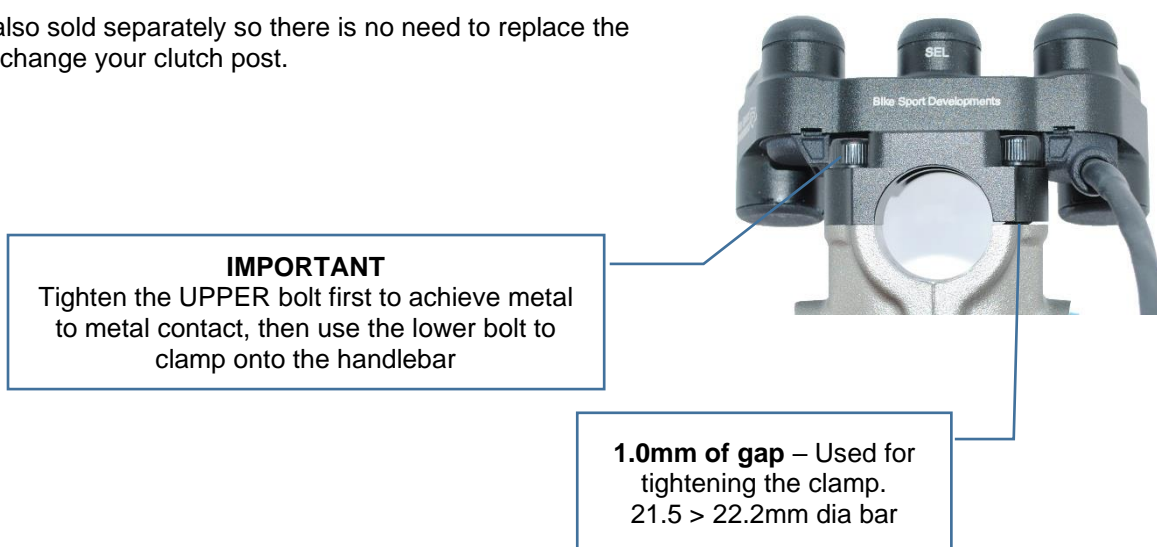
No modification of the bike wiring is necessary, this kit plugs directly into the connectors of the bike. 100% 'plug and play'.

---

**Mounting** - These switches mount directly onto our own clutch post clamp and are adjustable left / right to suit the rider

Several clamps are available (see page 3 for all options but as standard we will supply the **CL-K** clamp to suit 36mm in-line clamp bolts as standard on the Kawasaki

Clamps are also sold separately so there is no need to replace the switch if you change your clutch post.



---

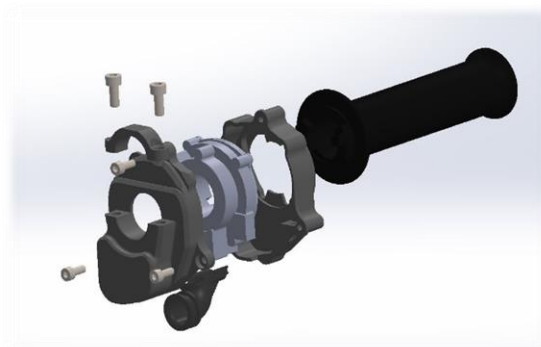
**Matching right side products**

**BD-SW-4BC-36** This 4 way right switch provides the Stop/run, Start, Select functions as well as a spare latching on/off yellow switch for use with any rain light wiring on the bike.

This also clamps to the standard brake pump to save space on the bars with a choice of clamps to suit whatever brake pump you have fitted.



**KT165** – Billet aluminium throttle housing to enclose the standard sensor element within a more compact and stronger casing. This product also eliminates the unusual negative free play in the standard housing.



**Mounting** - These switches mount directly onto our own clutch post clamp and are adjustable left / right to suit the rider

Several clamps are available, but as standard we will supply the **CL-K** clamp to suit 36mm in-line clamp bolts as standard on the Kawasaki

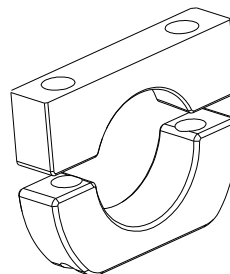
One clamp of your choice is supplied free of charge with each switch assembly.

**Clamps**

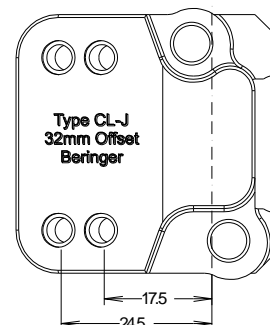
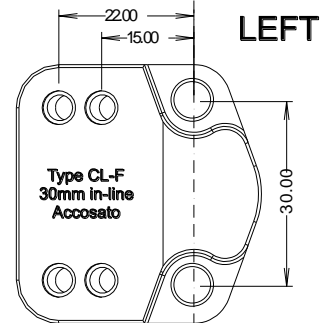
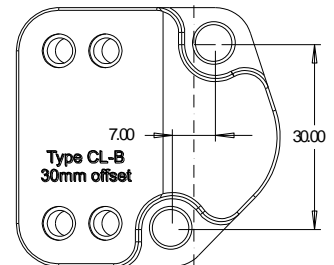
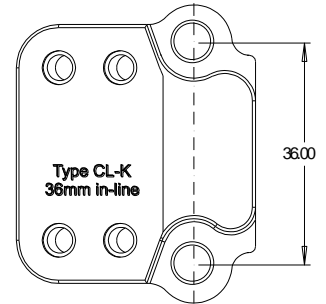
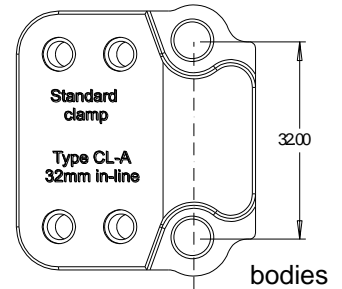
- BR-G** - Generic clamp as seen in the image below.
- CL-A** - To suit 32mm in-line clamp bolts
- CL-B** - To suit 30mm / 7mm offset bolts – Brembo XR , GP
- CL-F** - To suit 30mm in-line bolts as found on Accosato / Hel clutch posts.
- CL-K** - To suit 36mm in-line on Kawasaki
- CL-J** - To suit 32mm / 6mm offset bolts on Beringer products

These clamp designs use far less space on the handlebar than conventional switch and are fully adjustable.

All clamps are angled towards the rider for improved ergonomics.



**Type G**  
Generic clamp  
left or right



**LEFT**