



**MICROTEC®**

## Getting started guide for software M197 1.2b

**IMPORTANT:** this guide is only intended to get you over the basic installation process. We recommend that you read and study the M197 manual, which can be found on the CD supplied with this kit.

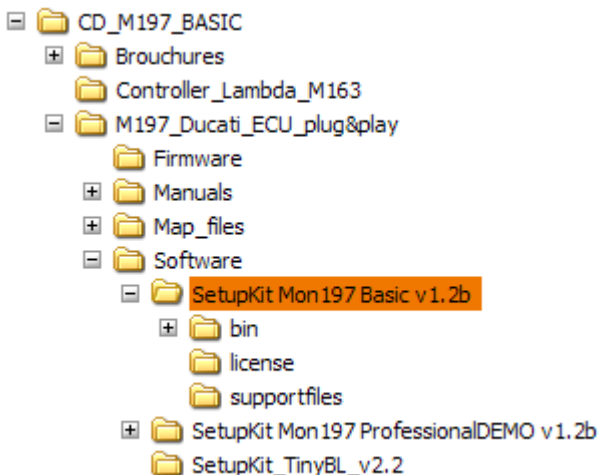
If yours ECU has been supplied without a set of maps pre-loaded by your dealer then you will need to follow this guide to get up and running.

This quick start guide is only relates to software install, PC communication and throttle calibration.

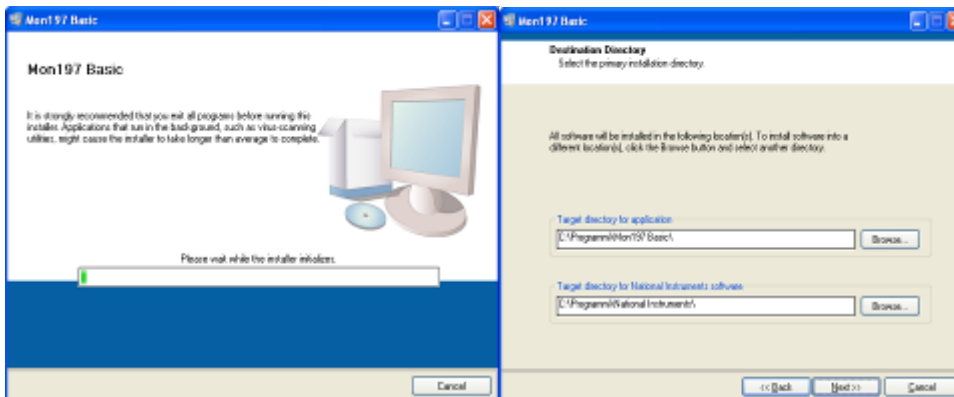
## Software installation

This software has been designed to run with Windows XP and Vista.

Place CD in your PC then browse using windows explorer until you locate the contents of the CD as seen here.



In the folder highlight you will find the setup.exe to install the MonM197. Double click this setup.exe file to start the install.



Choose an installation folder, or use the default one as show here.

When complete restart your PC.

There will now be a new desktop icon and also a new entry from start menu.

**MICROTEC S.r.l.**

Via Avvis 3 – 21032 CARAVATE (VA) ITALY – C.F. – P.IVA 02356120127 – Reg. Imprese 24798/1997 VA  
Tel. +39 0332 601731 – Fax +39 0332 771777



### Configuration and map files

In the CD you find a folder called Map files. Inside here there are a config and map file for several different bikes. Copy the map library from the CD to the software you have just installed.

File ending in **.ECD** are configuration files and contain information relating to the physical setup of the bike such as throttle calibration, switch input and welcome dash string. Generally these aren't changed once the bike has been set up. But it's important to have the right one loaded into the ECU as they vary by bike model.

File ending in **.EMD** are the map files and contain all of the tune-able parameters specific to a bike.

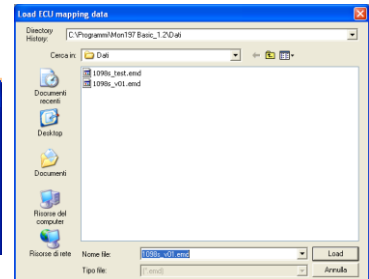
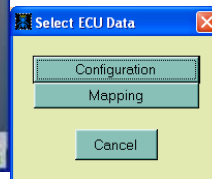
### Getting started with the software

After installation your software should look like this starting it.



Press the **load** button located on the lower button bar. Then choose configuration and then browse for a **.ECD** file which suits your bike.

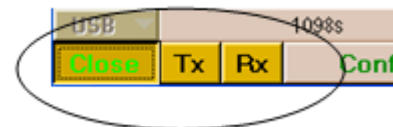
It's now necessary to load a map into the software, which is done in very much the same way. Press **load** button again to display the Select ECU data window but this time select the mapping button.



Again you will be presented with a browser window but this time you are looking for an EMD file. Locate a file to suit your bike and press load button. You are now ready to communicate with the ECU.

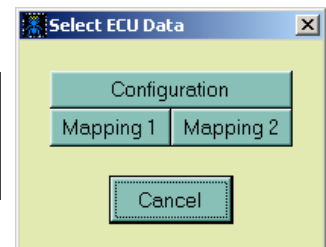
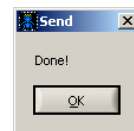
### Communication

Connect M196 CAN USB converter from ECU to PC and wait until driver usb finish the installation. Then switch on the bike power. Now press the **open** button, if communication is successful the open button will now read **Close** and the TX and RX button will be active.



To send either a Configuration or a Map to the ECU press the **TX** button, the following window will open.

By pressing the **Configuration** button you will send the complete Configuration file to the ECU, this takes approx 5-6 seconds and will be followed by this confirmation.

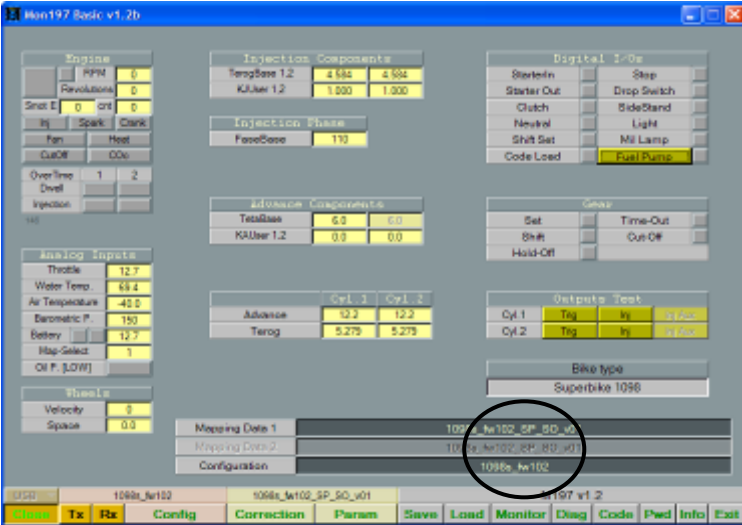
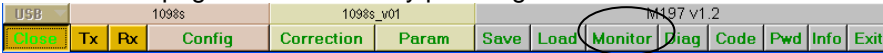


By pressing **Mapping 1** or **Mapping 2** you can send your complete map into either Map position 1 or Map position 2. In this way you can have 2 completely different maps that are instantly switch able by the rider/driver with start button.



### Monitor

The monitor page can be found by pressing this button

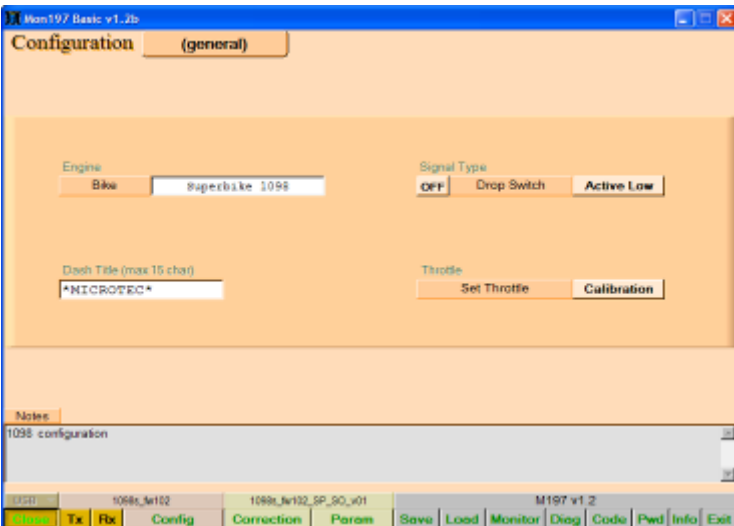


This monitor page will show you which maps and configuration files have been uploaded into the ECU.

Use this as a confirmation that your previous work has been done successfully.

### Throttle calibration

The config page can be found by pressing this button

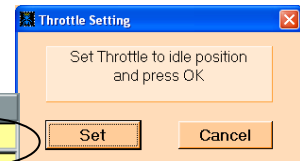


**Throttle – set throttle:** section for linearise throttle potentiometer. It's very important to do it. Through calibration button you can start zero throttle.

At first close the throttle and press set in this window,

Then open full gas and press set for recording the values into the ECU.

At the end transmit configuration file to the ECU.(TX)



Analog Inputs	
Throttle	17.9
Water Temp.	3.3
Air Temperature	-40.0
Barometric P.	150
Battery	12.3
Map-Select	1
Oil P. [LOW]	
Wheels	
Velocity	0
Space	0.0

You can check your throttle values using the monitor page

### Now you are ready to start your bike!