

BD_SW_5B_04 Five button handlebar race switches for Kawasaki ZX10 – 2011 > 2015

This switch is a direct replacement for the standard left hand switch assembly found on the ZX10 as well as the Lap timer Start/Stop switch originally on the right side

The set is specifically designed to be used with 'kit' electronics where the turn indicator input functions as a pit speed limiter, but can be used on stock electronics knowing that this function will not work.

No modification of the bike wiring is necessary, this assembly plugs directly into the three mating loom connectors.

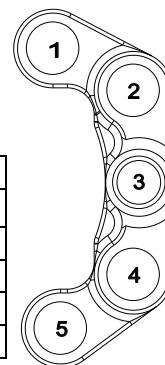


Connector 13 way triangular..... Power and Traction control modes
 Connector 210 way block..... Pit limiter and Lap trigger
 Connector 32 way block..... Lap timer Start/Stop

Switch types

Fill in the form below using the choices indicated, the default selections are shown in (brackets).

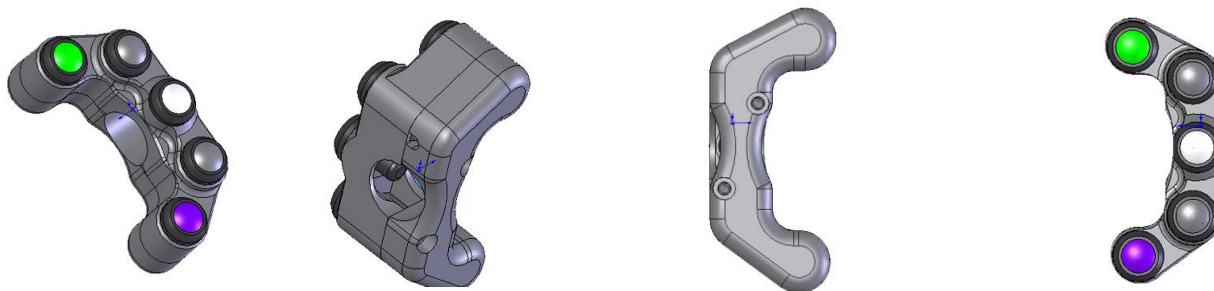
- **Switch type** – Momentary or latching (note – momentary is normally open circuit)
- **Switch colour** – Black / Blue / Green / Red / White / Yellow



	Colour	Text	Function
1	Green	SET	Start/Stop for lap timer, moved from right side of standard switch assembly
2	Black	POW	Power mode (see caution note below)
3	White	PIT	Pit speed limiter – Press and hold to activate (originally the left turn signal)
4	Black	KTRC	Traction control (see caution note below)
5	Blue	LAP	Lap trigger (originally the flasher function)

Caution: Do not press button 2 and 4 at the same time to

Layout



Electrical / Mechanical Characteristics

Wire..... Type 55 / 24
 Switch sealing IP67
 Housing.....Aluminium

Coating.....Black anodise
 Dia (handlebar)22mm (7/8")
 Engraving see data above

Ordering Information

Part No.	Connector	Cable	Description
BD-SW-5B-04	See above	650mm	5 way handlebar switch – ZX10 - 2011 > 2015