

Bike Sport Developments Ltd

The Old Barn, Greatworth Hall, Greatworth, Oxon, OX17 2DH - UK

Tel 0044 (0)1327 263942 – mail@bikesportdevelopments.co.uk / www.bikesportdevelopments.co.uk



BD_SW_2B_17 Start / Kill 2 button handlebar race switches for MV Agusta F3 675/800

This switch is a direct replacement for the standard Start / Kill switch assembly found on the F3, all models

This aluminium assembly has been designed ultra-slim and encompasses a red latching switch for RUN/STOP and a black momentary switch for the starter motor. Note – Run position is with red switch OUT

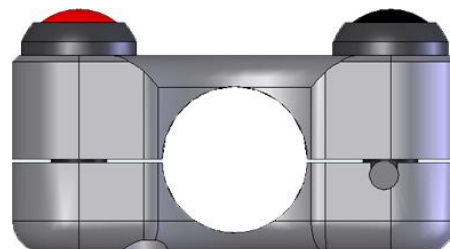
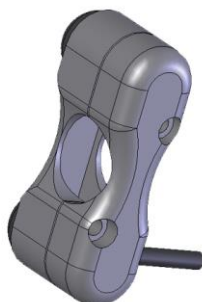
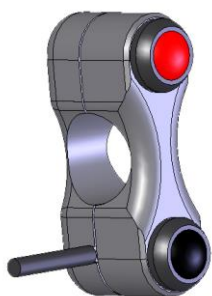
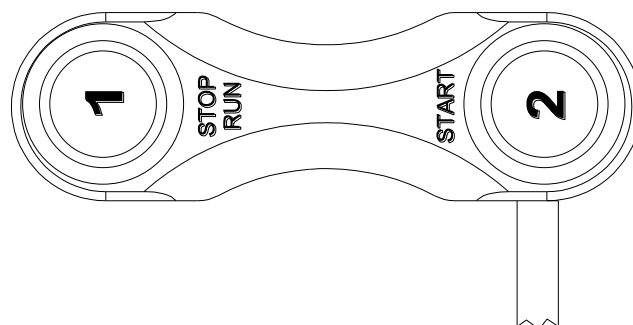
No modification of the bike wiring is necessary, this kit plugs directly into the 5 way connector of the standard loom.

This switch includes the wires for the brake light switch, simply plug them into the 2 remaining pin locations of the 6 way connector block and lock in place with the connector latch. For bikes that do not need the brake light switch simply leave them off and close the connector latch.



Function:

Pin	Color	Function	Switch Type
1	Red	Run / Stop	Latching
2	Black	Starter	Momentary



Electrical / Mechanical Characteristics

Wire..... Type 55 / 24
Switch sealing..... IP67
Housing..... Aluminium
Coating..... Black anodise

Dia (handlebar)22mm (7/8")
Max width 20.5 mm
Min width at centre 13.5 mm
Weight 85 g

Ordering Information

Part No.	Connector	Cable	Description
BD-SW-2B-15	See image	360mm	2 way handlebar switch for Start / Kill – MV F3